

'while more disadvantaged young people are in higher education than ever before, the discrepancies between institutions and the number of those students leaving before completing their studies continues to grow.'

(Gilbert,2019)

## CA route to CSM

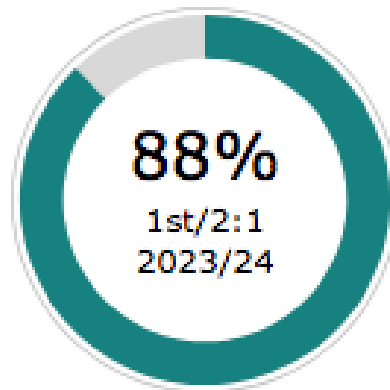


Our Contextual Admissions process helps us to identify students with the most creative potential, regardless of their personal background or educational experiences.

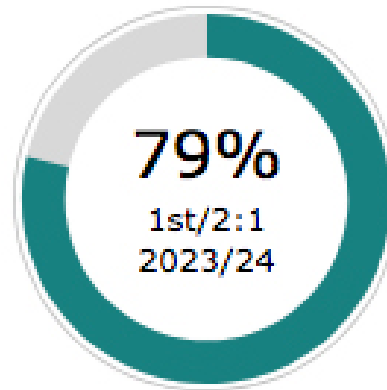
(UAL, 2025)

# UAL Data

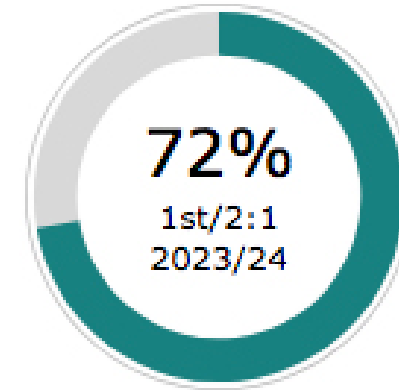
## Attainment



home white  
(1700 students)

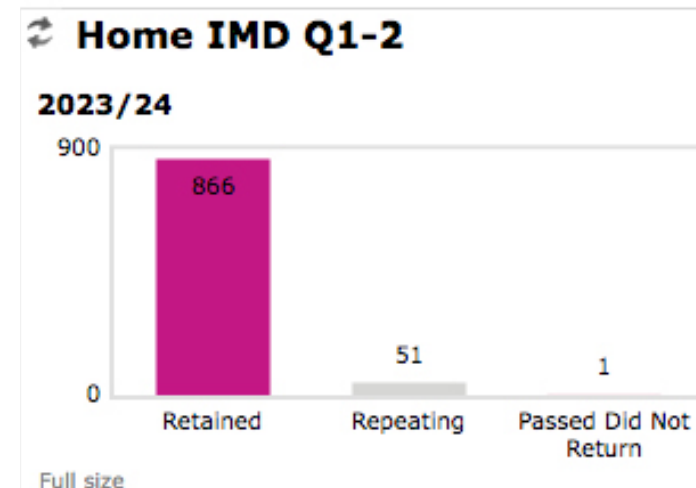
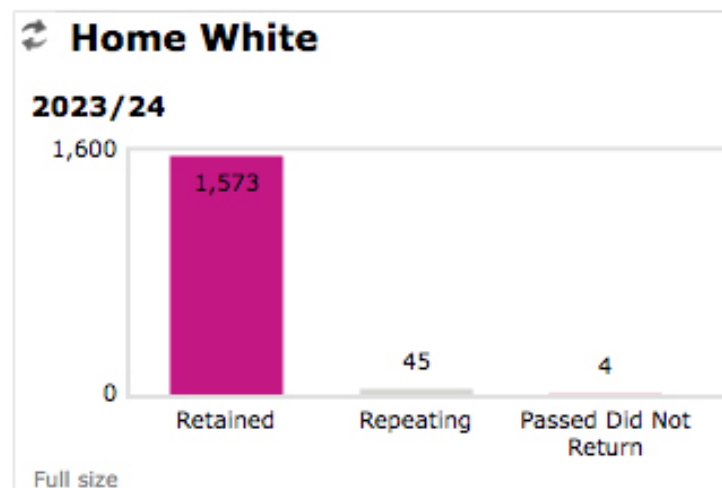


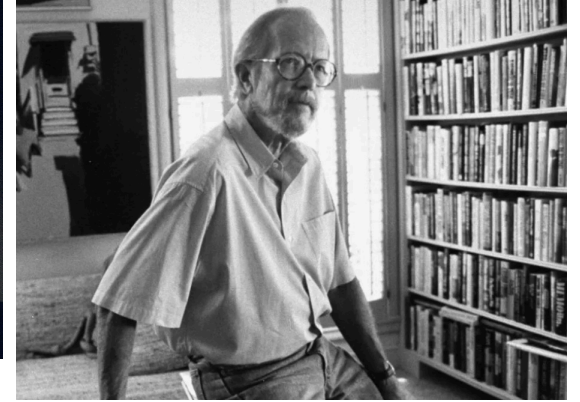
home IMD Q1-2  
(539 students)



home black  
(155 students)

## Retention







## **Research Method**

### **Focus Group Interviews - (Mentor pair) (Mentees individually)**

**Stimulation** - *when the group discussion generates excitement about a topic.*

**Snowballing** - *when the statements of one respondent initiate a chain reaction of additional comments)*

**Synergism** - *when a wider bank of ideas emerges through group interaction.*

**Security** - *when the group provides a comfort and encourages candid responses.*

**Spontaneity** - *because participants are not required to answer every question, their responses are more spontaneous and genuine.*

(Vaughn, 2013)

## Finding out & Finding Meaning



**Pair 1**

**Mentor (a)** 2nd yr non CA

**Mentee (a)** 1st yr CA

- Frequency & friendship
- Built a new community
- A bridge to the course
- ADHD diagnosis
- Culture & Myth



**Pair 2**

**Mentor (b)** 2nd yr CA

**Mentee (b)** 1st yr CA

- Frequency & friendship
- Built a new community
- A bridge to the course
- Culture & Well-being

## **Conclusions**

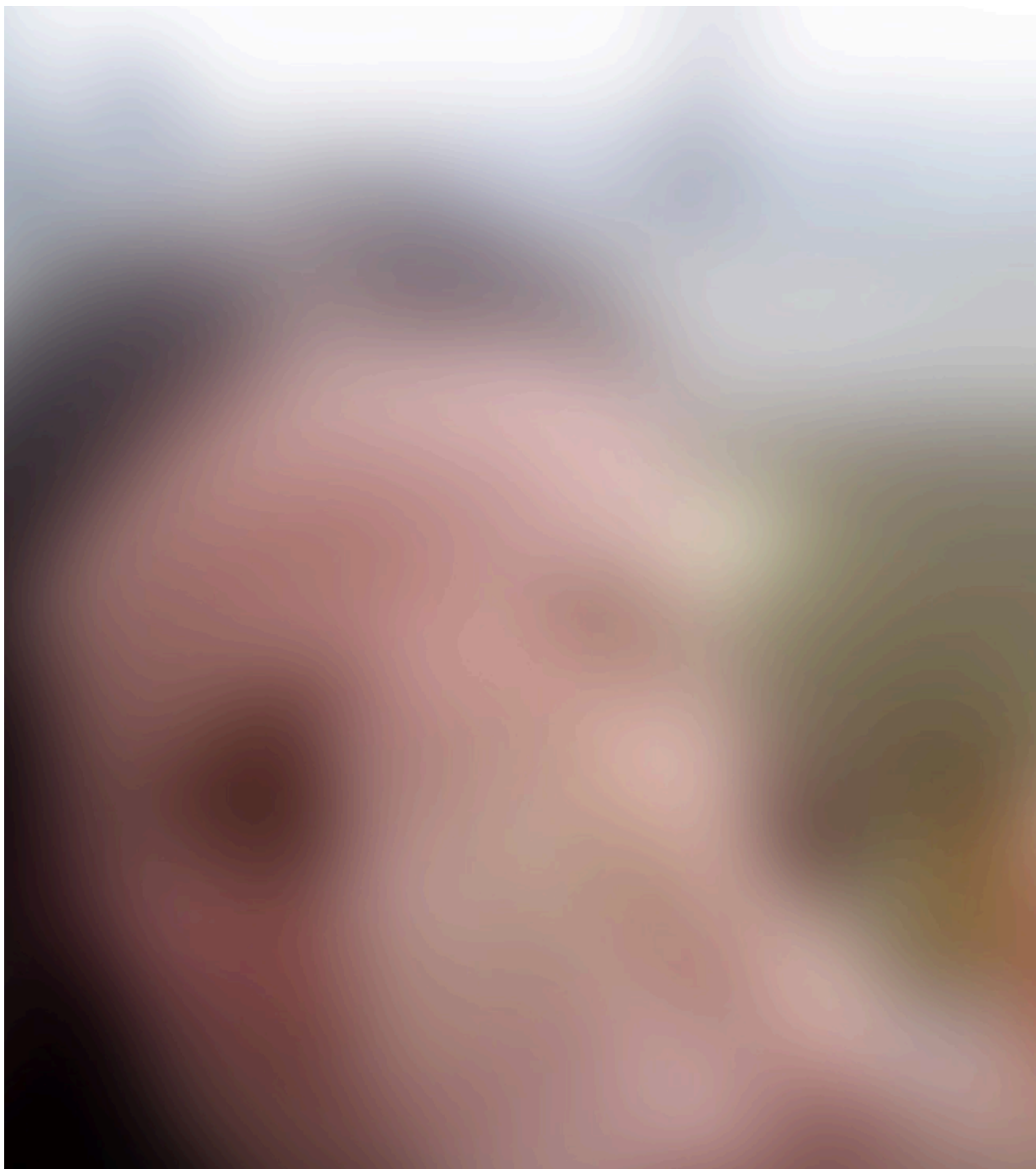
**Learning** - *students getting further, quicker, on their own.*  
*Ownership*

**Relationships** - *Group working, inter year connection, embedding students early, fostering a sense of belonging,*  
*- so important in first year*

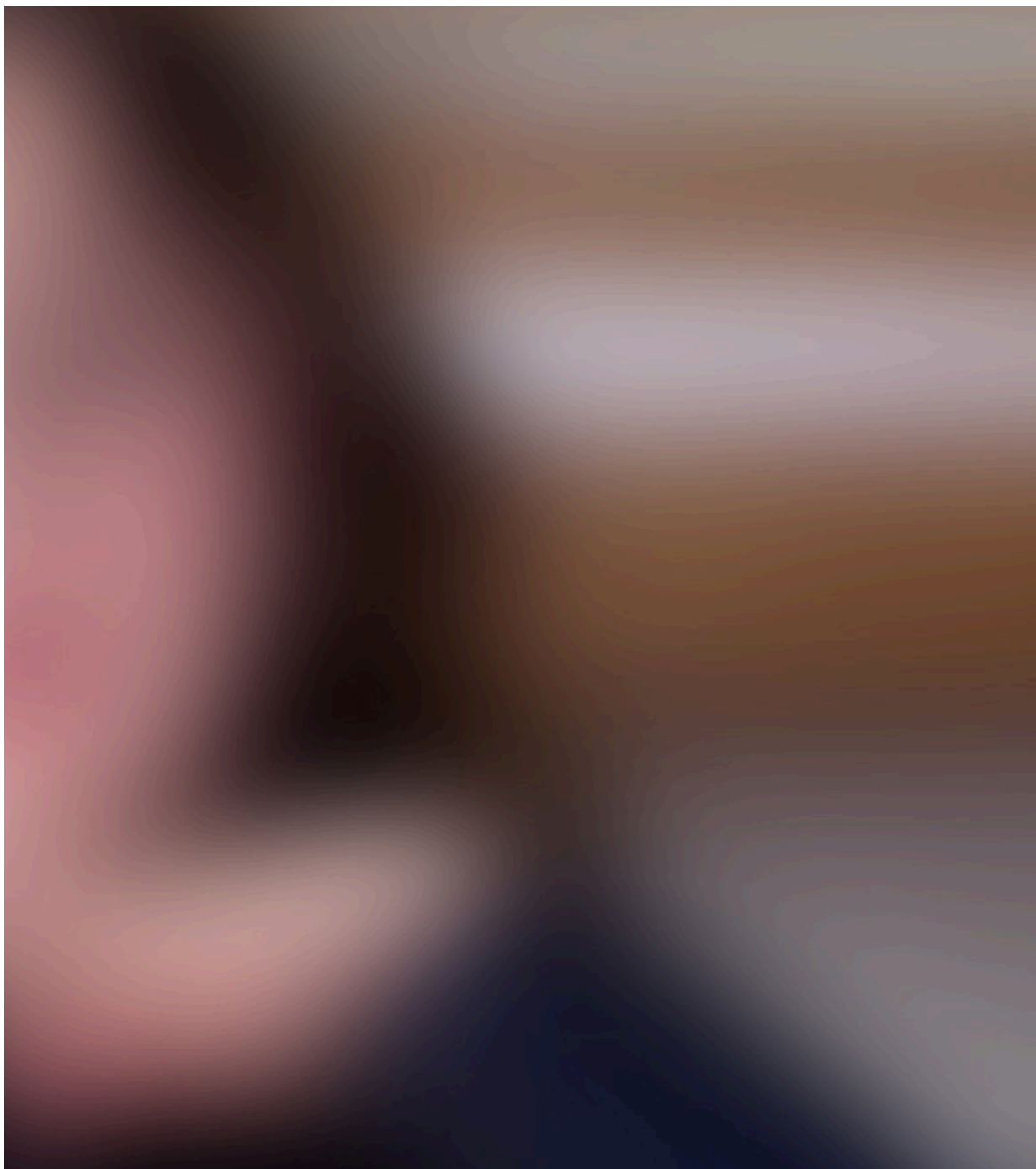
**Reflections of yourself** - *effective relationships & the power of seeing some like you that's further ahead.*

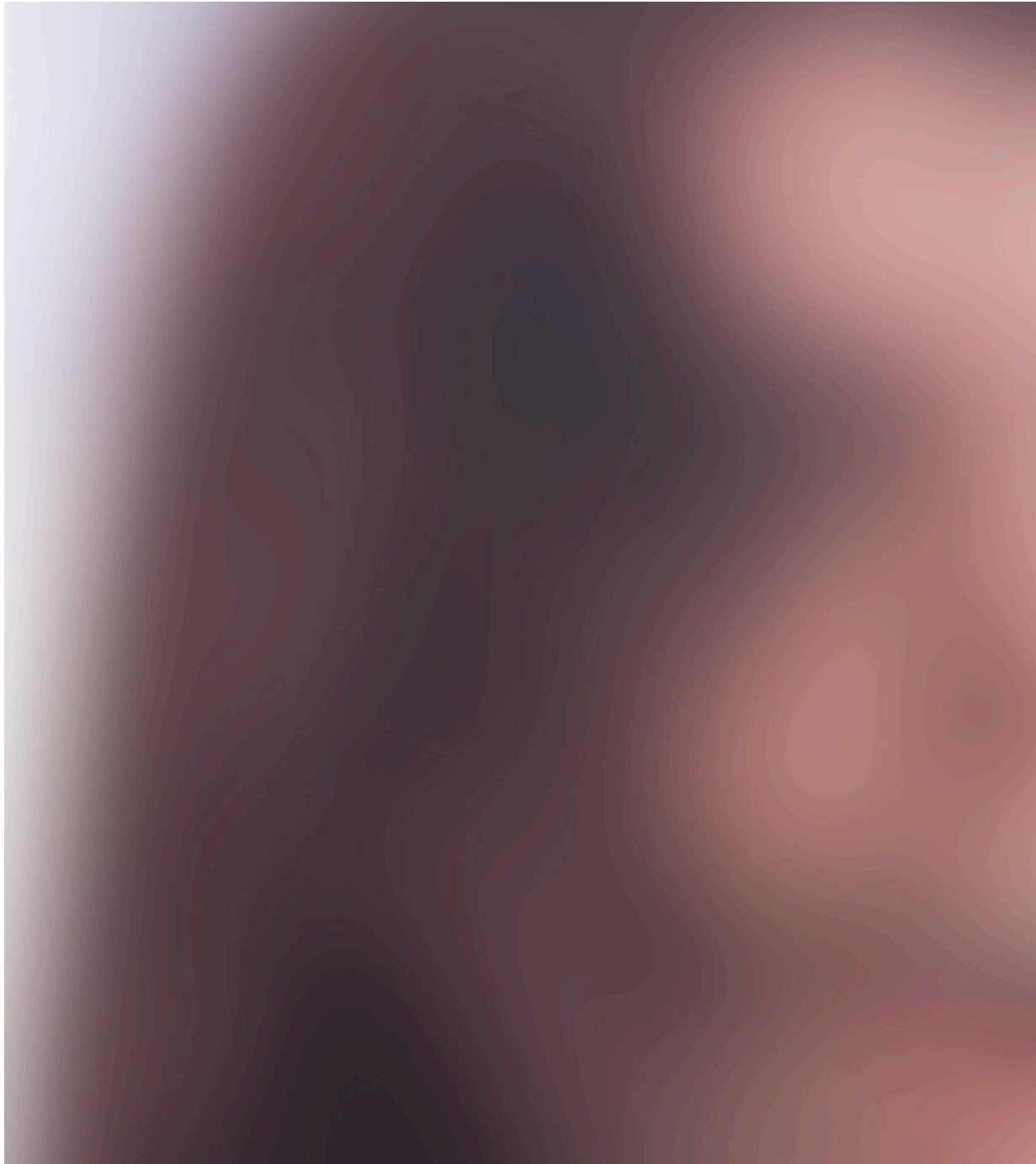
**The power of self governance** - *took some time to set up but then ran itself. Considerations for expansion- swap. Good trade off.*

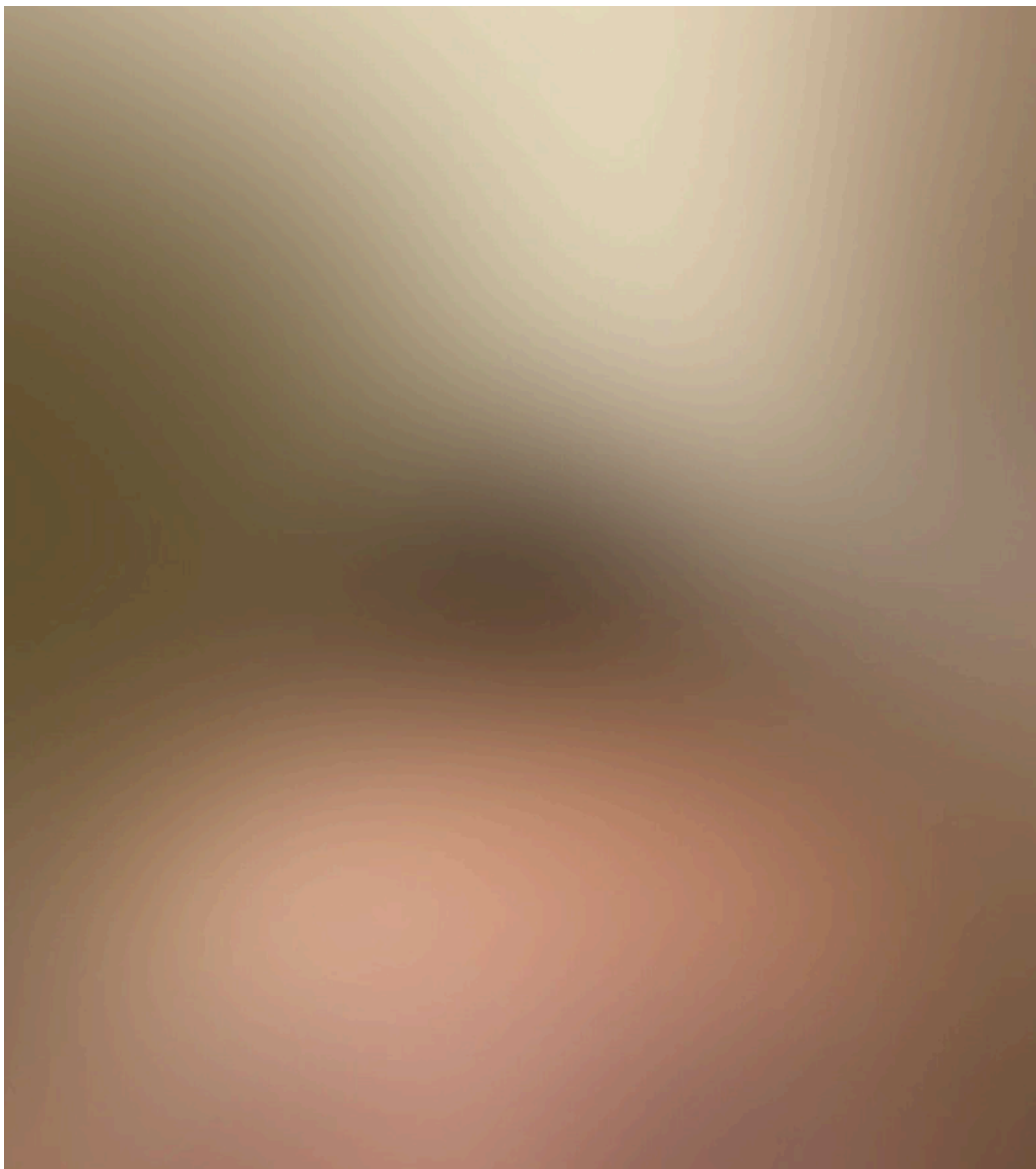
**It was about people and basic human needs** - *care, support, connection, collaboration, friendship, belonging*











## **Memorable quotes**

'I felt like I was with a friend constantly. Even every time we see each other, we get so excited.'

'Even though I've been at this uni for like two months, I feel like the closest person is my mentor at this stage.'

'We are praying we get the same studio next year'.

'He obviously had quite a big sense of relief after I explained that to him, he was like, OK this is no longer as difficult and scary....I can be a bit more like myself'.

## References

In order of appearance:

Gilbert, J. H., 2019. Precariat Insurgency: A Means to Improve Structures of Inclusivity in Higher Education. London: Institute of Education Press.

UAL, U. o. t. A. L., 2025. We are University of the Arts London. [Online]  
Available at: <https://www.arts.ac.uk/study-at-ual/contextual-admissions>

UAL, U. o. t. A. L., 2025. Active Dashboards- Attainment. [Online]  
Available at: <https://dashboards.arts.ac.uk/dashboard/ActiveDashboards/DashboardPage.aspx?dashboardid=cdf319c3-c4df-49aa-abcd-00cbdb5186e2&dashcontextid=638562870995429950>  
[Accessed 02 01 2025].

UAL, U. o. t. A. L., 2025. Active Dashboards- Retention. [Online]  
Available at: <https://dashboards.arts.ac.uk/dashboard/ActiveDashboards/DashboardPage.aspx?dashboardid=0d043ff1-ce30-48c8-9bc9-5e70ac06e520&dashcontextid=638562870995429950>  
[Accessed 02 01 2025].

Vaughn, S. S. S., 2013. Focus Group Interviews in Education and Psychology. Sage Research Methods, pp. 2-9.